



Department  
of Health

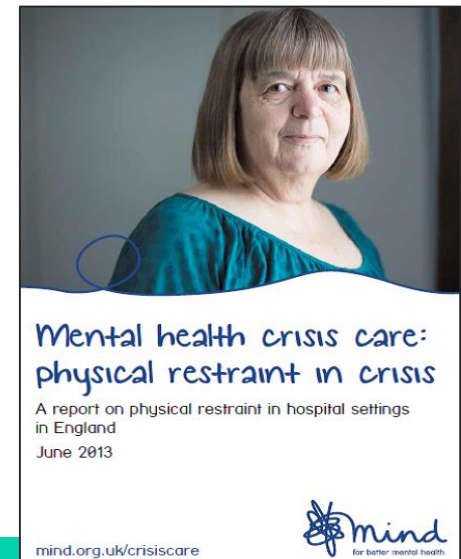
# Reducing restrictive practice; implementing Positive and Proactive Care

4<sup>th</sup> Health & Justice Summit  
Cardiff  
10<sup>th</sup> November 2016

Guy Cross – Policy Lead, Positive and Safe, Department of Health

# Why Positive and Proactive Care?

- Abuse at Winterbourne View
- Subsequent investigations show that these findings are widespread
- Transforming Care Programme
- Mind Freedom of Information request shows wide variation in the use of restraint



# Aims of Positive & Proactive Care

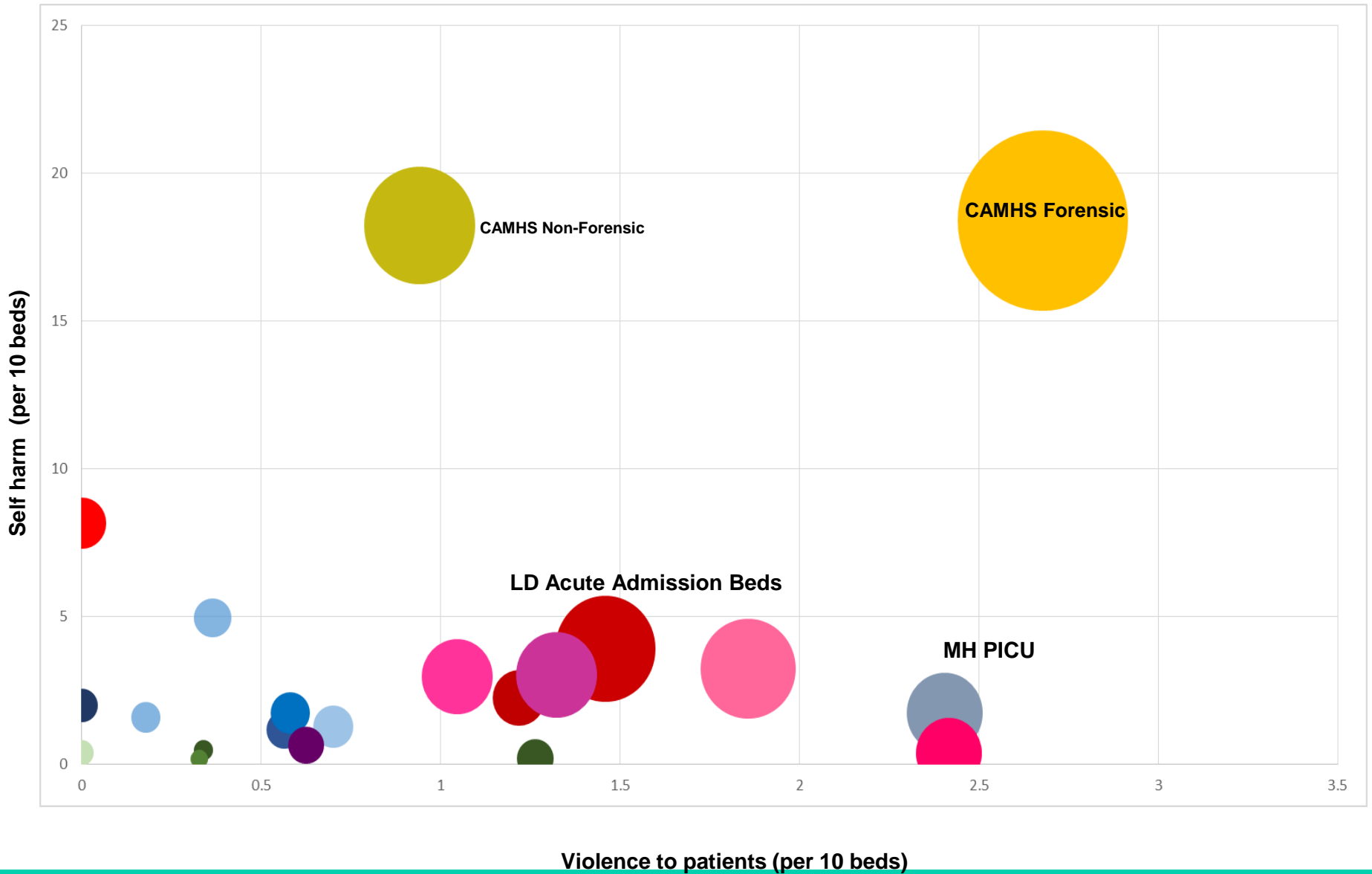
- Cultural change
- Development of therapeutic environments
- Focus on quality of life
- Governance models
- Reducing reliance on restrictive interventions
- Learning, sharing and promoting practice innovation
- To ensure that restrictive interventions are used in a transparent, legal and ethical manner

# Department of Health Implementation

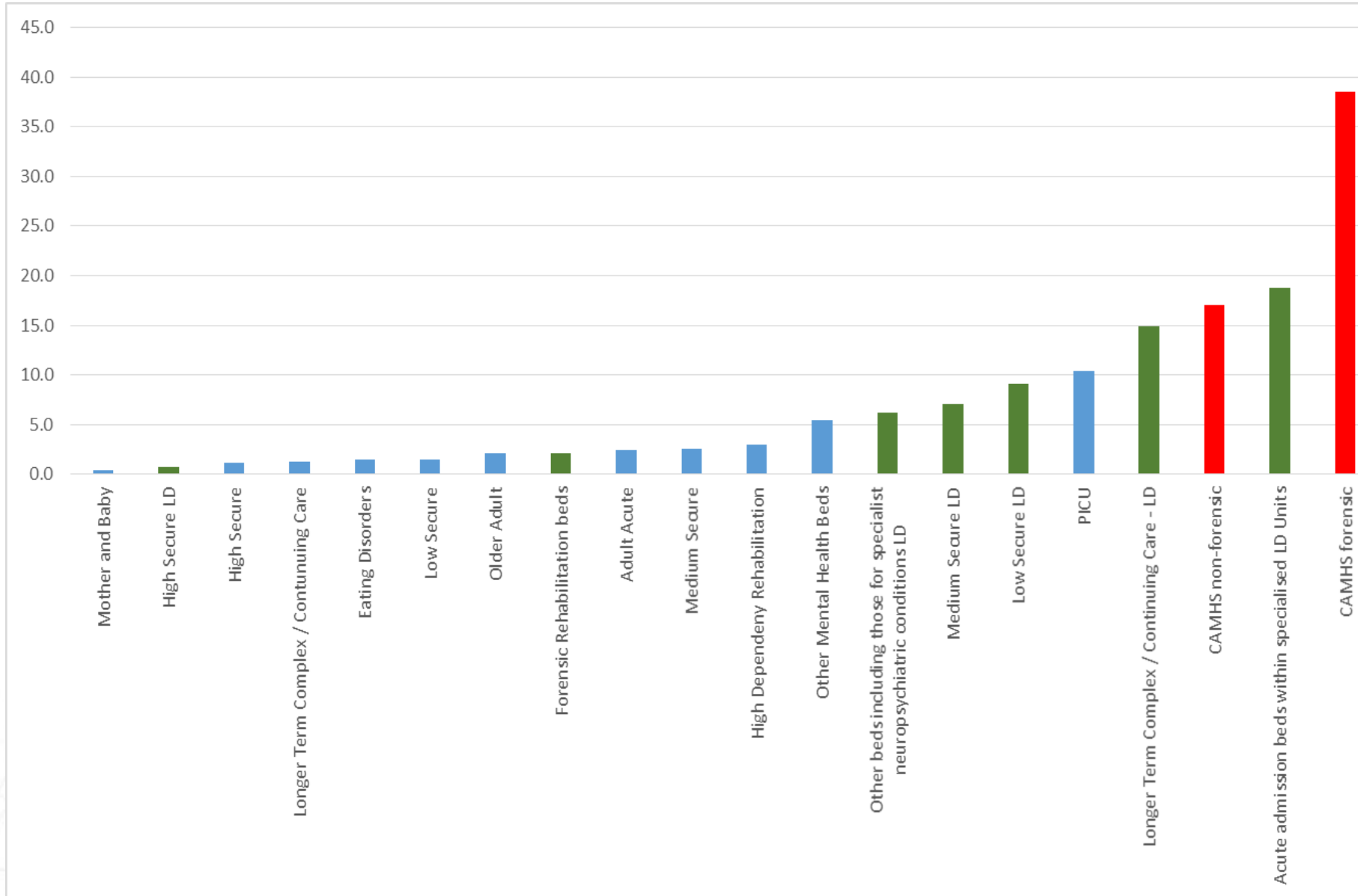
- Data collection
- Spreading good practice
- The regulatory framework
- Developing standards



# Why restrictive practice is used

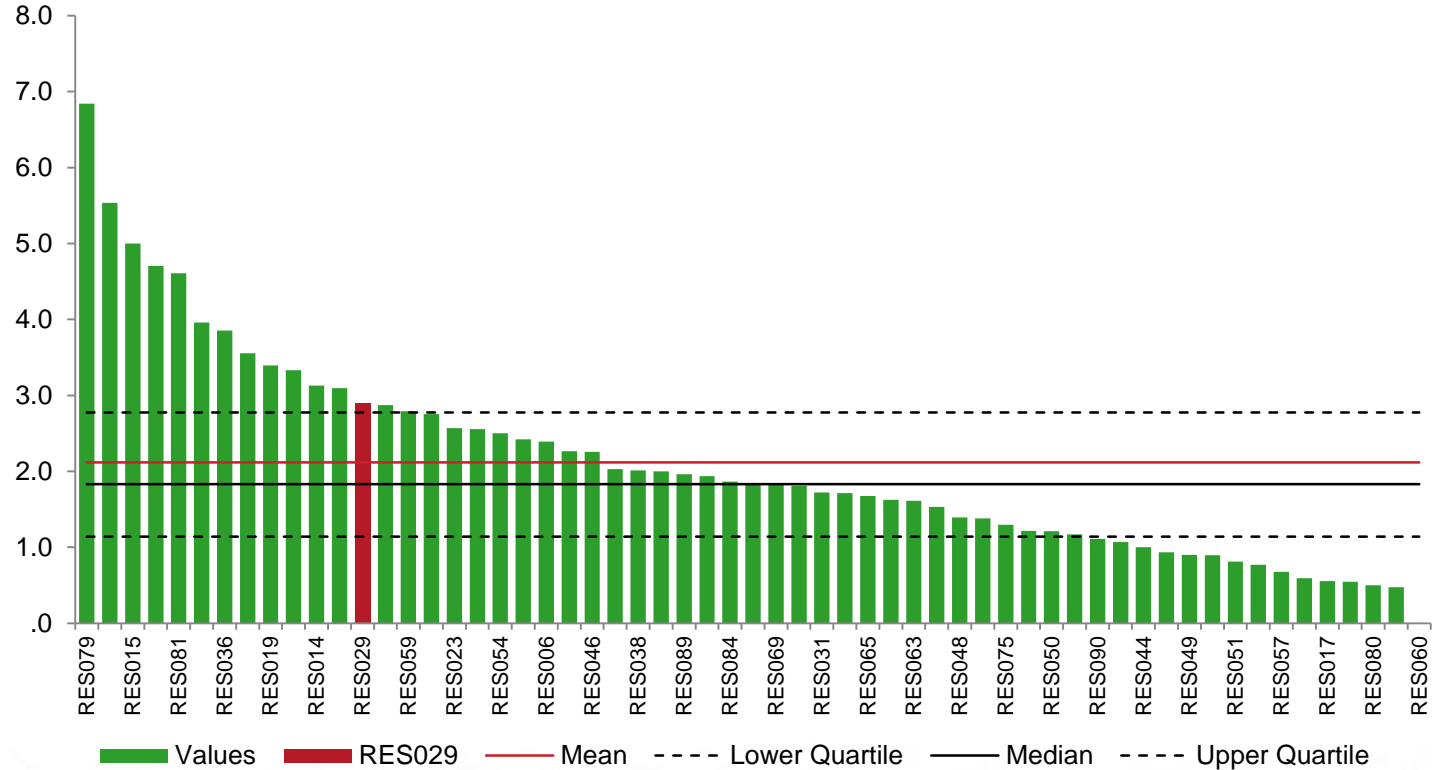


# Use of Restraint per 10 beds



# Restraint in adult acute

Total number of incidences of restraint - Adult Acute - per 10 beds



# Implementation by providers

- Reviewing their training – more focus on prevention
- Looking at why, where and when restraints happen
- No Force First, Safewards
- Positive Behavioural Support
- Developing Trust wide restrictive intervention reduction plans





# Is everyone focusing on the right things?

- We're a high reporter
- Our system doesn't record that
- What counts as a restraint
- Seclusion

**It's not about the numbers**



# Organisational assurance

- Organisation and ward risk assessments reviewed regularly and appropriate action taken
- Board oversight of training and service user involvement
- Litigation
- Staff sickness and agency costs
- Complaints



**It's about patient care and staff safety**

# Contact Details

**Guy Cross**

**Guy.Cross@dh.gsi.gov.uk**