

# Health and Social Care in a custodial environment

# Introduction

Context setting

Joy Dalkin - Head of Offender Management HMP Exeter

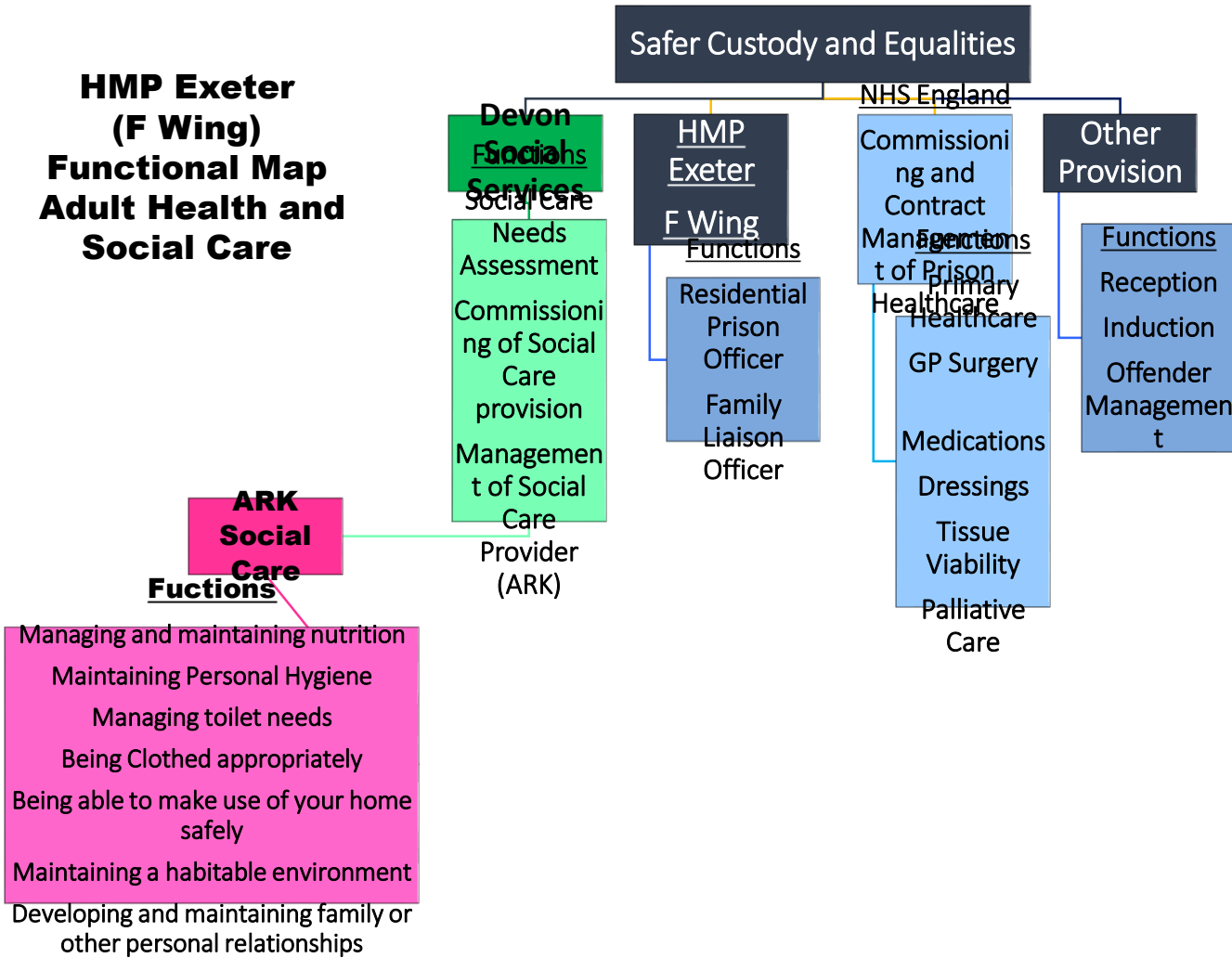
Dave Crawford - Head of Safer Custody HMP Exeter

Maria Kneller - Senior Social Worker Devon County  
Council

# The challenges

- Commissioning and Contracts
- Geographic dispersal
- Increasingly aged prisoner population

**HMP Exeter  
(F Wing)  
Functional Map  
Adult Health and  
Social Care**



# Geographical Dispersal

The South West Prison Service Area holds in Custody potentially 6,371 male prisoners over the age 18 in 10 locations covering 6 Counties.

Prison	Category	Operational Capacity	Prison Built
HMP Exeter/YOI	Local	561	C1850
HMP Bristol/YOI	Local	650	
HMP Winchester/YOI	Local	544	
HMP/YOI Portland	YOI	530	C1848
HMP Dartmoor	Cat C Trainer	659	C1809
HMP Channings Wood	Cat C Trainer	724	
HMP Guys Marsh	Cat C Trainer	579	C1960
HMP Erlestoke	Cat C Trainer	470	
HMP Isle of Wight/YOI Albany and Parkhurst	Cat B Trainer	1,139	
HMP Leyhill	Cat D – Open	515	C1986

The Devon Prison Cluster has an operational capacity of 1844 men.

Prison	Category	Operational Capacity	Prison Built
HMP Exeter/YOI	Local	561	C1850
HMP Dartmoor	Cat C Trainer	659	C1809
HMP Channings Wood	Cat C Trainer	724	

# Prisoner Demographics

## Ageing Prisoner Population

Prison population by age, 2010-2014, England and Wales

Age band	30-Jun-10	30-Jun-11	30-Jun-12	30-Jun-13	30-Jun-14
15 - 49	76,739	76,431	76,321	73,611	74,429
50 - 59	5,414	5,928	6,460	6,760	7,360
60 - 69	2,220	2,287	2,449	2,590	2,692
60 - 64	1,432	1,430	1,495	1,571	1,589
65 - 69	788	857	954	1,019	1,103
70 - 79	574	663	730	768	880
70 - 74	414	483	517	501	602
75 - 79	160	180	213	267	278
80 - 89	50	62	87	112	142
90 and over	5	3	1	1	6
<b>All</b>	<b>85,002</b>	<b>85,374</b>	<b>86,048</b>	<b>83,842</b>	<b>85,509</b>

# Key Components

Health and Social Care Screening and Assessment



Case / Treatment / Social Care Planning



Case / Treatment / Social Care Management



Delivery

# Going Forward

- Reform
  - Prison
  - NHS
  - Social Care
- Continuity of Care
  - Through the criminal Justice system
  - On release
  - Transfer to other establishments
- Understanding Respective Roles
  - Communication
  - Information sharing agreements
  - Challenge when we see something not right
- Safeguarding / CQC /HMIP
  - standards



# Contact details

- Joy Dalkin - [Joy.Dalkin@hmpps.gsi.gov.uk](mailto:Joy.Dalkin@hmpps.gsi.gov.uk)
- Dave Crawford - [david.crawfordDA@hmpps.gsi.gov.uk](mailto:david.crawfordDA@hmpps.gsi.gov.uk)
- Maria Kneller - [maria.kneller@devon.gov.uk](mailto:maria.kneller@devon.gov.uk)